

The "BRICKS AND MORTAR"

newsletter

Highlighting Stories as told by the artifact collections of the Wellsville Historical Society

Volume I, Issue 7

April 2011

Wellsville

Historical Society

Mission Statement

Preserve* the history of the area through the collection and maintenance of records and artifacts.

Present* Wellsville's history to the public by means of a museum, educational programs and presentations.

Promote* cultural tourism by communicating the history of Wellsville and surrounding communities to visitors and local citizens.



Committee Members

Collections

Nancy Lytle, Janet Smith, Carole Haxton, Rose Breen, Nita O'dea, Linda Klamm

Membership / Fundraising

Donald Hrabe, Bill Lytle, Becky Potter, Sandra Hausler, Kelly Jerred, Lenise Eddings

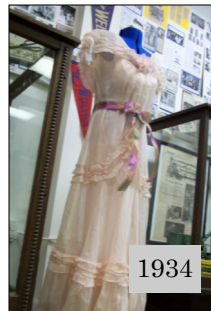
Interview / Family History

Janet Broers, Jeanine Berrier
Linda Broers

Board Members

Steve Layton- President
Nancy Lytle- Vice President
Janet Broers- Secretary
Donald Hrabe- Treasurer
Carole Haxton- Member

Dreamy Dresses from Promenades' Past



Since 1936, the Wellsville High School Prom Walk has been a distinctive tradition in our community. On Prom Day, the community turns out to line the Prom Walk streets of our one light town to watch the parade of promgoers. The streets are lined with lawn chairs and town folk, as the cameras flash getting those once in a life time memories.

Families and neighbors cheer as the promenading juniors and seniors pause for the special photo opportunity and smile, each a Prince Charming and Cinderella for the day. Our unusual tradition has interested a variety of media, from local television stations (PBS) to the nationally known Kansas City Star Magazine.

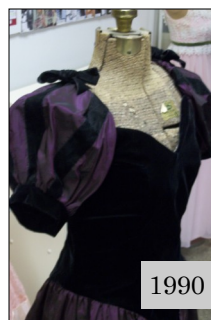
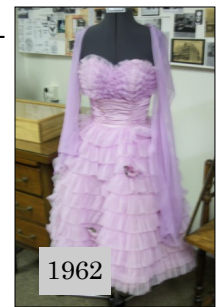


APRIL 26 1946

Don Shay-Katherine Wingert, Bus Hill, Edward Barnett-Betty Lou, Bill Weber-Mildred Knoop, Merl Birkhead, Keith Chanay, Harold Leit, Bob Wiggins-Dot Phares

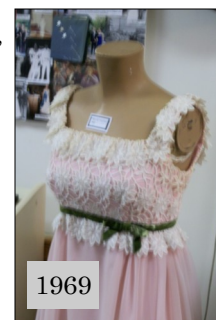


The Wellsville Historical Museum is highlighting prom dresses of years past. These lovely dresses date back as early as 1934, just a few are pictured here. You will be amazed at not only the cost of a few of these gowns, but also the workmanship of hand made gowns and differing styles thru the years. Just a few are pictured here.



This years Prom Walk will be April 16, starting at 5 pm. If you have an interest in fashion,

art, or just want to walk down memory lane. This is a "must see" Wellsville Museum event.



Wellsville High School Alumni Invited

This year the Wellsville Museum will be open for visitors after the Wellsville High School Alumni Banquet on May 21st . We invite everyone to come and view our museum.

Thank You Volunteers

Nancy Lytle
JoAnn Massengale
Pam Phares
Jim Wright
Linda Klamm
Dawn Barry
Mike Holtwick
Sandra Hausler
Rose O'Dea
Nita O'Dea
Dick Raugewitz
Diana Lawrenz
Linda Broers
Shirley Phillips
Evan Phillips
Lenora Brecheisen
Charlie Moore
Amanda Lytle
Don Hrabe
Emaline Guy
Bill Lytle
Gail O'Connor
Carole Haxton
Emily Kotay

The Museum



is open to visitors every Saturday between the hours of 9am and 3pm. Weekday tours can be arranged by contacting Nancy Lytle at 785-883-4255.

Annual Meeting Highlights

The Wellsville Historical Society held its annual meeting on February 20, 2011, at the museum site. Meeting and Committee highlights are listed below. View our complete meeting minutes on our new web site, www.wellsvillehistoricalsociety.org.

Highlights

Marlin Chanay presents a memorial check of \$2020.00 to the Society in honor of his mother, Helen Chanay. Our **New Web Site** completion was announced. **Fundraising** ideas were; summertime outdoor movies; stories about Wellsville, written by Paul Brockman, could be reprinted and sold to raise funds; A reprint of the original 1976 Wellsville History Book is being considered; along with the reprint of cook-books and post cards. **Interview Committee** is working on Civil War descendents in Wellsville; Rock Creek history and Wellsville Obituaries are being compiled into notebooks and CD's for the Historical Society and Library.

Oral Interview of Bill Kyle, (Excerpt)

Interviewer: Amanda Wahlmeier

Interviewer: So growing up, what did your parents do?

Bill: My dad was a farmer and we had 120 acres. And when I was growing up, he farmed it-the early part of my life - with horses. Then about in the 1940s- somewhere in '41,42,43, along in there -- he bought his first tractor and I thought that was the most wonderful thing that ever happened. He farmed --there was four of us kids and he took care of raising on the farm and made a living for us on 120 acres, which you'd never do that now. But it was a good life. Everybody was poor so nobody knew that you were poor. But, as I mentioned a while ago, we had our own cows, our own hogs, our own chickens, raised a lot of our own grain and had a big garden.

Interviewer: So you were fairly self-sustaining.

Bill: Yep, we just about could live off that farm and not sell anything. But of course we'd go to town, like I mentioned awhile ago, and do the trading and sold the eggs.

Interviewer: So that was like the Depression Era?

(Read the entire interview on our new web site.)



Nancy Lytle accepts a check from Marlin Chanay and family, in memory of Helen Chanay. (above)

Members review last years meeting minutes. (below)



In a Little Town

I like to live in a little town
Where the trees meet over
the street,
And you wave your hand
and say "Hello"
To everyone you meet.

I like to stop for a minute
Outside a grocery store,
And hear the kindly gossip
Of the folks moving in next
door.

For the life is interwoven,
With the friends you learn
to know,
And you feel their joys and
sorrows
As they daily come and go.

So I'm glad to live in a little
town
And I care no more to roam.
For every house in a little
town
Is more than a house--it's
home.

Unknown

New Web Site

Thanks to the diligent work of Lenora Brecheisen, the Wellsville Historical Society has the new web site up and running. The site is easy to use and has a great deal of information about the Society and area interests. Tabs on the left quickly take you to a variety of informational locations.

Membership: How to become a member

Newsletters: Previous newsletters.

Events: Check for Scheduled Events

Histories: Local History includes cemetery locations through out the area with a Franklin County cemetery map. Cremation list of Wilson's Funeral is also included here. The Community History includes Black Jack and Wellsville with transcribed oral accounts of 9 family histories, thus far. Collection Acquisitions information is still in infancy.

Gallery: Contains many of the "long ago" pictures of Main Street, baseball teams, school houses, City Hall and even the first telegraph office.

Board Members and Committees: Lists current committee members .

Volunteer: Lists many ways to assist the Society with committee opportunities

About Us: Describes our purpose and goals

Contact us: Gives directions, email contact, museum location and phone numbers.

Links: Full of links to a variety of important Wellsville on line sites as well as County, Kansas and National, genealogical, historical and library sites.

Take a minute and check it out, then let us know what you think.



A Very Special Thanks

Rose O'Dea for all your hard work re-making many of our new display posters.

Gail O'Connor and family for donating the lovely child's wicker rocking chair. Once owned by Marcelene Todd.

Casey Lytle for historical pictures.

Emily Kotay and Carole Haxton for Prom Poster

Thank you, every one for loaning your Prom Dresses.

Needs



New Poster Displays Needed

The museum has limited space and has been seeking ideas to improve displays. We are hoping to raise enough funds to purchase new wall displays (shown here) that will enable our visitors to view the items in a safe and efficient display while freeing up space for additional artifacts. Please help us display pictures safely and conveniently by making a donation.

We are interested in an old large clock of Wellsville significance.

Larger memorabilia holds great interest for the Wellsville citizens.

We welcome all donations.

2011 Membership Levels

The support of our membership has allowed the Historical Society to open our museum and preserve the many artifacts and memories of the Wellsville community. Consider us for your Memorial and Honorary gifts as well.

Please make checks out to :
The Wellsville Historical Society, Inc. P.O. Box 104, Wellsville, Ks. 66092

Membership Levels

Student \$2.00
Individual \$15.00

Family \$35.00
Bronze \$100.00
Silver \$250.00
Gold \$500.00
Conservator \$1000.00
Lifetime \$5000.00

Volunteer Opportunities

Volunteering is a great way to meet and visit with people visiting the area or our own community. Contact Nancy Lytle.



Preserving,
Presenting,
and
Promoting our
Community.

The Wellsville Historical Society
is affiliated with
The American Association
for State and Local History



Be Sure to Check out
our New and
Improved Web Site!

www.wellsvillehistoricalsociety.org

"The Past meets the Future for the Wellsville Historical Society.

"Facebook" is the place to get moment to moment information.

Become a Friend of the Wellsville Historical Society today.



Wellsville Historical Society
P.O.Box 104
Wellsville, KS 66092